



17 Sydney Road Beechworth VIC

3  2  2 

Located in a convenient Beechworth position, just a short walk or drive to cafés, restaurants, and local attractions, and within close proximity to local primary and secondary schools, this comfortable, light-filled home blends country charm with modern finishes.

The home offers a country-style, modern kitchen with electric cooking, dishwasher, and ample storage, flowing through to an adjacent dining and living area filled with natural light, complete with split system heating and cooling, and a ceiling fan.

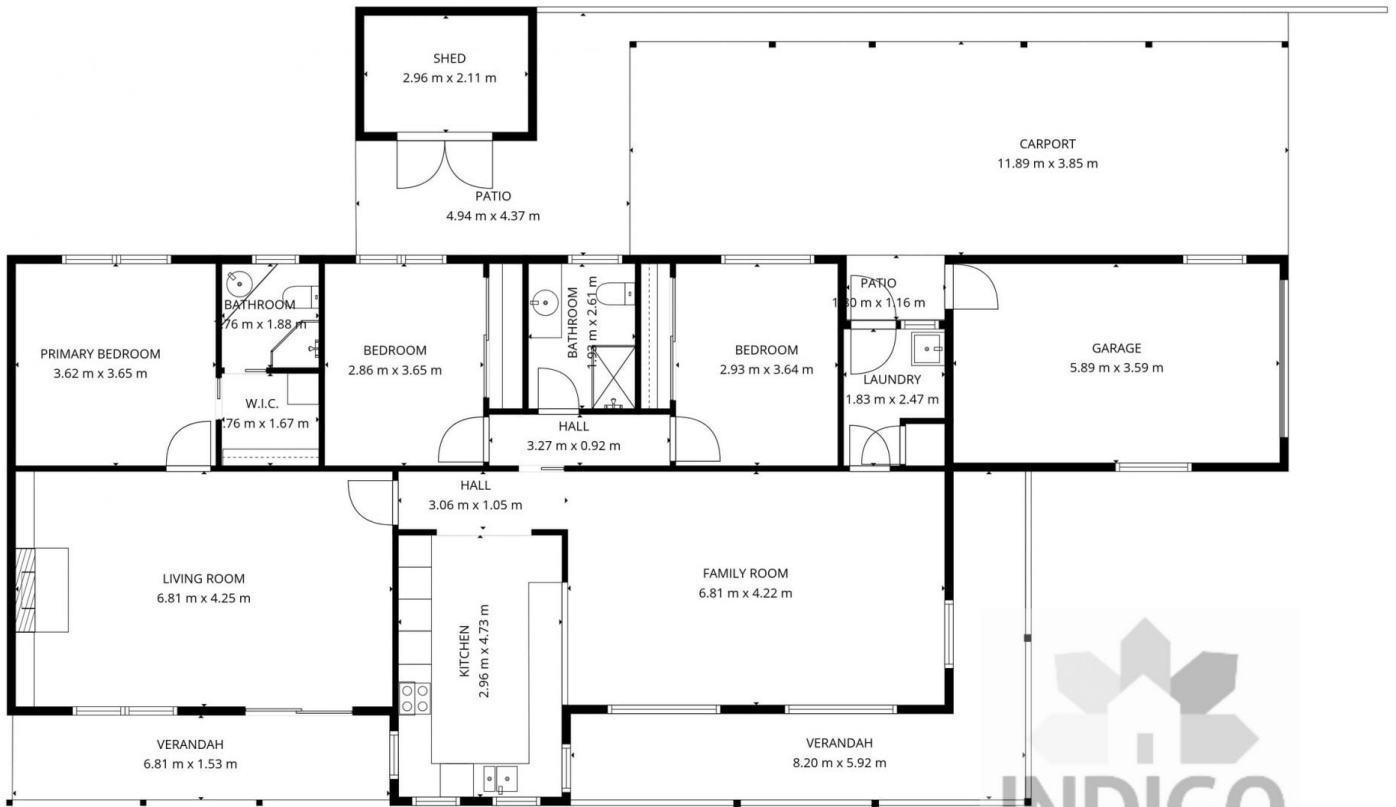
A separate lounge provides a second living space, featuring a wood heater, split system and ceiling fan, with doors opening out to the cottage-style gardens.

[For full version visit the website](https://www.indigorealestate.com.au/lease/vic/north-eastern/beechworth/residential/house/8689119)

Type : House
Price : \$550 per week
Land Size : 736 sqm
View : <https://www.indigorealestate.com.au/lease/vic/north-eastern/beechworth/residential/house/8689119>



Jaqui Ward
 0357 283295



TOTAL: 137 m²
 1st floor: 137 m²
 EXCLUDED AREAS: SHED: 6 m², GARAGE: 21 m², VERANDAH: 29 m²,
 CARPORT: 46 m², PATIO: 22 m², WALLS: 13 m²

FLOOR PLAN CREATED BY CUBICASA APP. MEASUREMENTS DEEMED HIGHLY RELIABLE BUT NOT GUARANTEED.