



40 Epsom Road Chiltern VIC

3  1  1 

Located only approx. 200m to all the popular central Chiltern shops, cafes, and conveniences, this charming three-bedroom, one-bathroom, easy-care home is a must-see for individuals, couples, retirees, and investors.

The welcoming front undercover verandah leads to the spacious, light-filled, open-plan living area which includes a country-style kitchen with electric oven, gas cooktop, dishwasher, double stainless-steel sink, island bench, enclosed pantry, ample storage, and meal preparation areas, dining area with sliding door access to the peaceful and private rear deck, and an adjacent roomy lounge with a wood combustion heater. Ducted heating and cooling are also installed.

Type : House
Price : \$ 510,000
Land Size : 808 sqm
View : <https://www.indigorealestate.com.au/sale/vic/north-eastern/chiltern/residential/house/8134119>

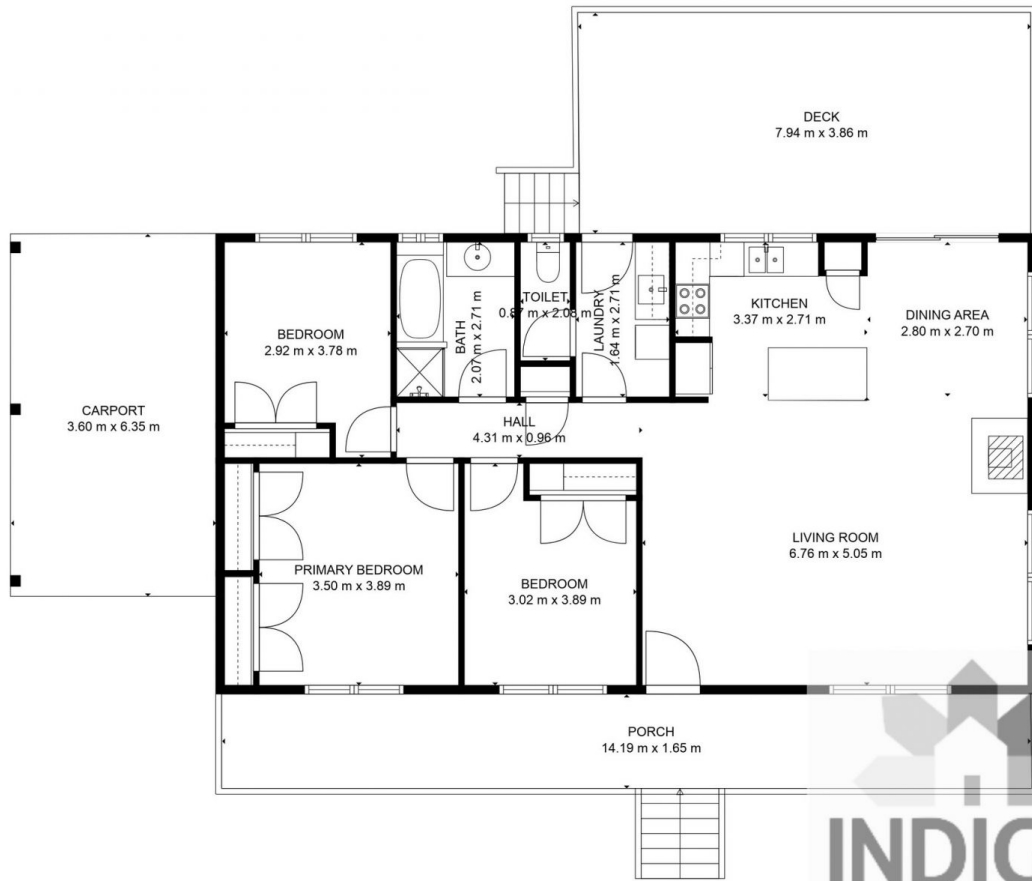


Jaqui Ward
0357 283295



Jamie Horne
0357 283295

[For full version visit the website](https://www.indigorealestate.com.au)



TOTAL: 110 m²

FLOOR 1: 110 m²

EXCLUDED AREAS: CARPORT: 23 m², DECK: 31 m², PORCH: 24 m²

FLOOR PLAN CREATED BY CUBICASA APP. MEASUREMENTS DEEMED HIGHLY RELIABLE BUT NOT GUARANTEED.