

1/6 Malakoff Road Beechworth VIC

2  2  1 

Located on approx. 340sqm, this immaculately presented two-bedroom, two-bathroom, low-maintenance, brick and iron-roofed townhouse is only a short walk, ride or drive to central Beechworth shops, cafes, and restaurants, walking and riding trails, Newtown falls, and the popular Gorge Drive.

This well-presented townhouse includes the main queen-size bedroom with an ensuite, featuring a shower, toilet, and vanity, and a second double-size bedroom. Both bedrooms are carpeted, and have built-in robes. The main tiled bathroom includes a shower, toilet, and vanity. There is a separate tiled laundry.

The kitchen includes electric cooking facilities, ample

[For full version visit the website](https://www.indigorealestate.com.au/north-eastern/beechworth/residential/townhouse/8002646)

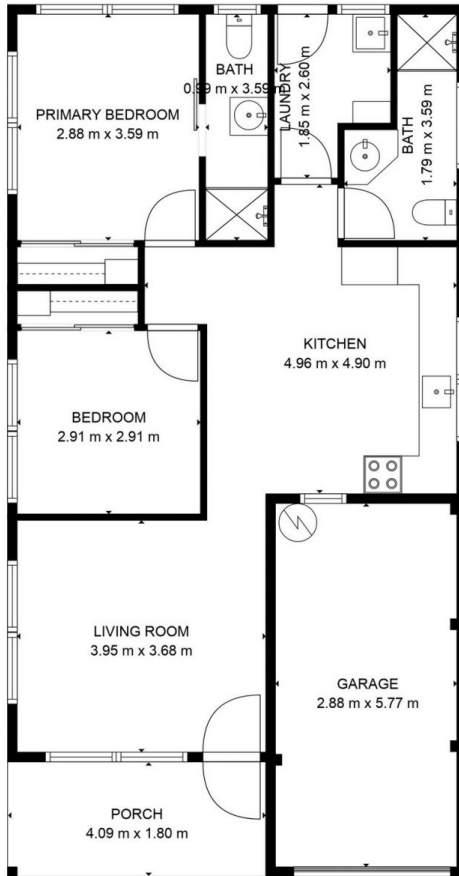
Type : Townhouse
Price : \$ 510,000
Land Size : 340 sqm
View : <https://www.indigorealestate.com.au/sale/vic/north-eastern/beechworth/residential/townhouse/8002646>



Jaqui Ward
 0357 283295



Jamie Horne
 0357 283295



TOTAL: 69 m²

FLOOR 1: 69 m²

EXCLUDED AREAS: PORCH: 7 m², GARAGE: 17 m²

MEASUREMENTS ARE CALCULATED BY CUBICASA TECHNOLOGY. DEEMED HIGHLY RELIABLE BUT NOT GUARANTEED.

