






2/8 Jardine Street Beechworth VIC

2  1  1 

Perfectly situated only approx. 120m to Lake Sambell and the Murray to Mountains Rail Trail, 2/8 Jardine Street is also within an easy approx. 800m walk to central Beechworth, Bowls Club, Chinese Gardens, Public Swimming Pool, and local parks.

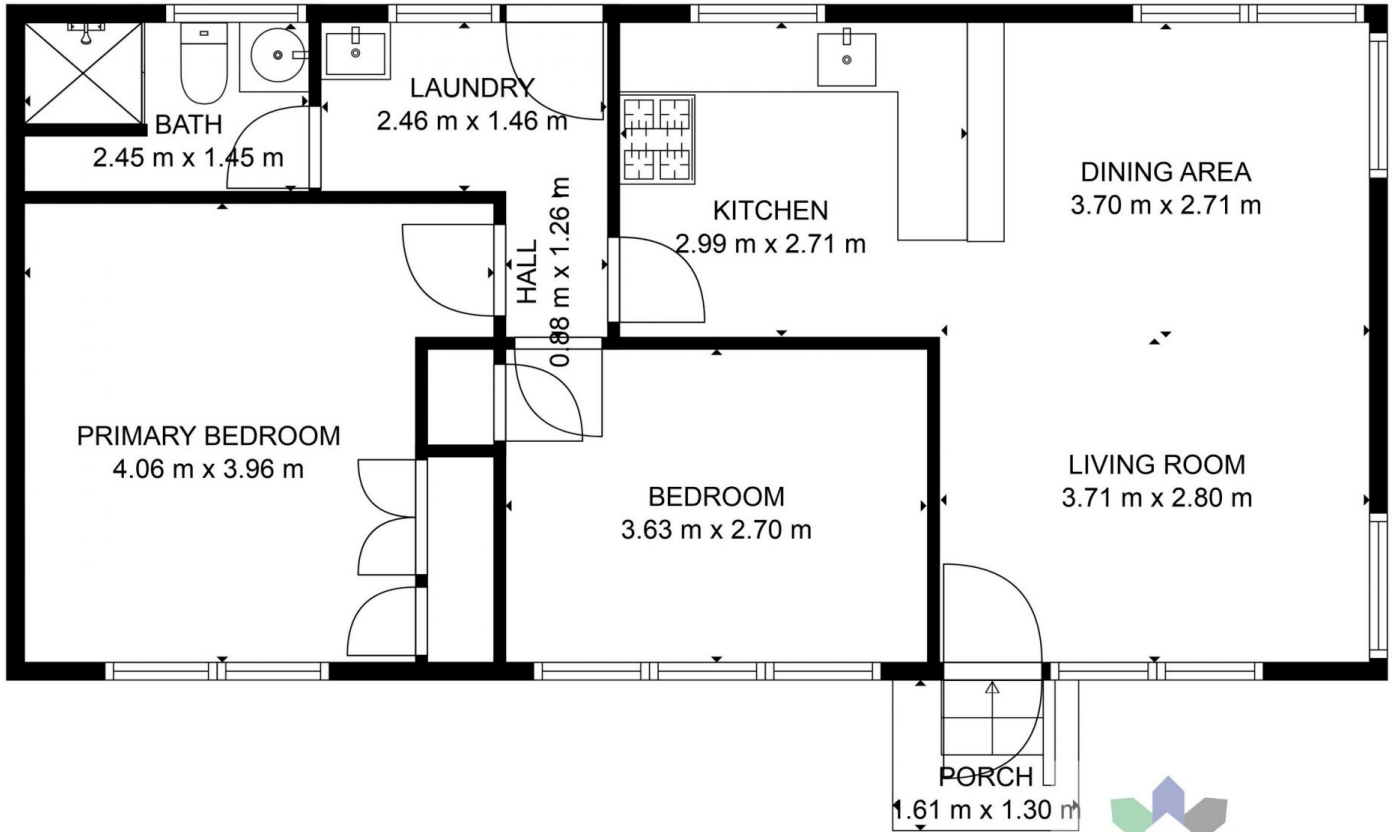
View : <https://www.indigorealestate.com.au/lease/vic/northern-eastern/beechworth/residential/unit/7779016>

This comfortable two-bedroom, one-bathroom unit features an open-plan kitchen with gas cooking and a loungeroom with split-system air-conditioning and a ceiling fan. The two queen-sized bedrooms feature built-in robes and a ceiling fan. The separate bathroom includes a shower, vanity, and toilet. There is also a separate laundry with independent rear access. Gas hot water is installed.



Jaqui Ward
0357 283295

Outside, these units are surrounded by established lawns and include single-vehicle undercover parking.



GROSS INTERNAL AREA
 FLOOR 1: 64 m²
 EXCLUDED AREAS: PORCH: 2 m²
 TOTAL: 64 m²

MEASUREMENTS ARE CALCULATED BY CUBICASA TECHNOLOGY. DEEMED HIGHLY RELIABLE BUT NOT GUARANTEED.

