



29A Camp Street Beechworth VIC

Ideally located in a super central, and highly visible Beechworth, location, and only metres to the main roundabout, this retail space is ideally situated to establish your business in one of North-East Victoria's most popular and iconic towns.

With commercial spaces in Beechworth tightly held, and rarely offered for rent, be sure to act quickly to secure this opportunity for your business.

This retail property includes a prominent window and street frontage, kitchenette, toilet, split system air-conditioner, and undercover front verandah.

For more information or to arrange an inspection, contact Jaqui Ward on 0457 883 295 or Jamie Horne on 0438 280 867

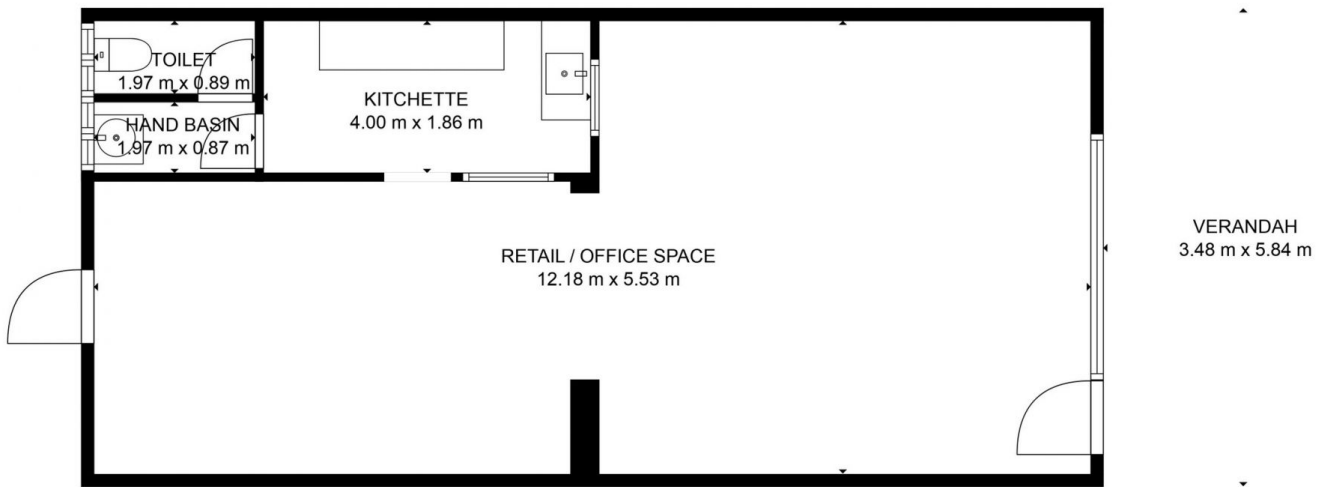
Building Size : 60 sqm
View : <https://www.indigorealestate.com.au/lease/vic/north-eastern/beeceworth/commercial/retail/7719760>



Jaqui Ward
0357 283295



Jamie Horne
0357 283295



GROSS INTERNAL AREA
FLOOR 1: 67 m²
EXCLUDED AREAS: VERANDAH: 20 m²
TOTAL: 67 m²

MEASUREMENTS ARE CALCULATED BY CUBICASA TECHNOLOGY. DEEMED HIGHLY RELIABLE BUT NOT GUARANTEED.

