



2 Wood Street Beechworth VIC

3  2  1 

With views overlooking the Beechworth Gorge and only an approx. 500m walk to local shops, cafes, restaurants, and conveniences, this three-bedroom, two-bathroom, brick and tiled roofed home also offers ease of access to local schools, churches, walking and riding trails, and public transport.

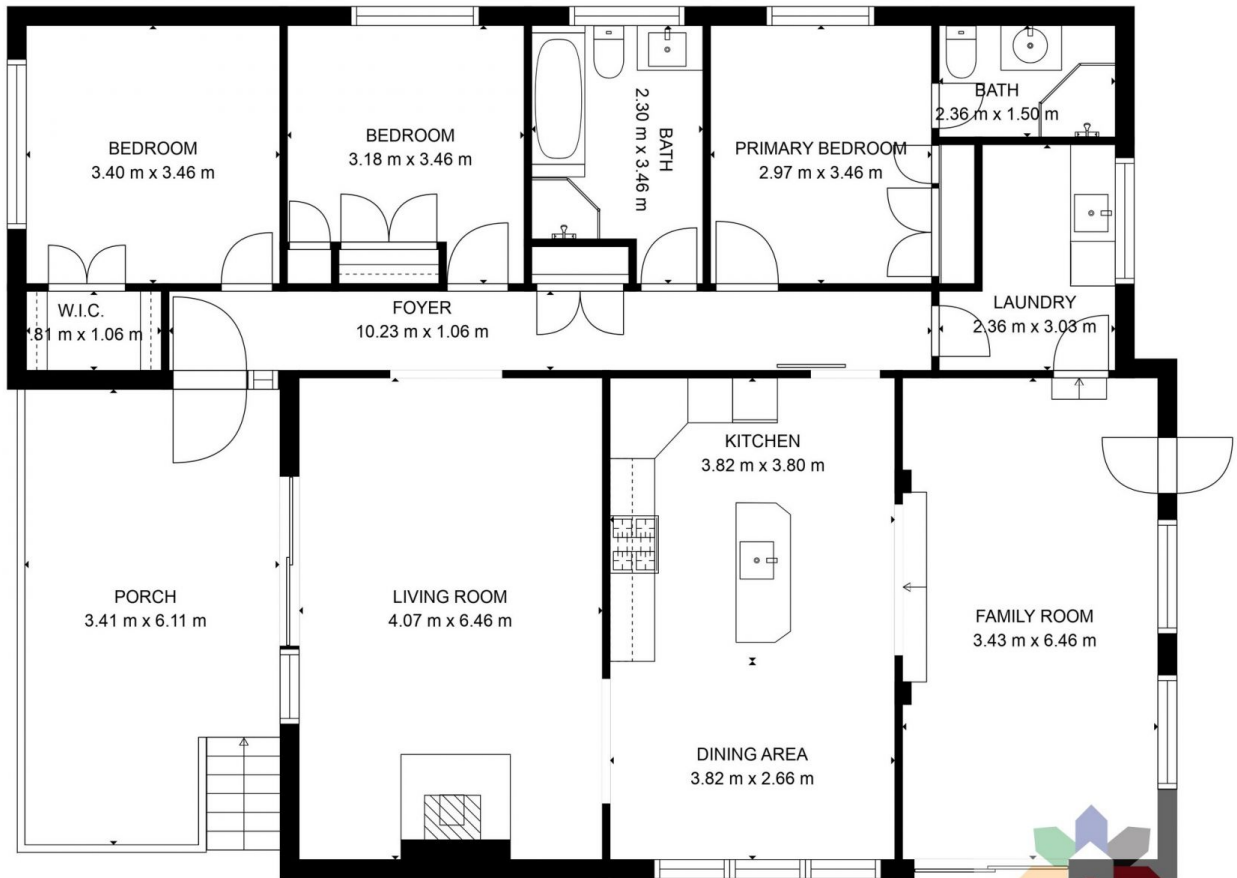
Land Size : 987.6 sqm
View : <https://www.indigorealestate.com.au/lease/vic/north-eastern/beechworth/residential/house/7685793>

This low-maintenance light-filled home features the main carpeted queen-sized bedroom with a ceiling fan, built-in robes, and a tiled ensuite with a shower, vanity, and toilet. Both additional queen-size bedrooms are carpeted, with one featuring a built-in-robe and the other a walk-in-robe, ceiling fan, and views to the front gardens.



Jaqui Ward
0357 283295

The carpeted lounge features a Nectre wood combustion heater and direct access to the front spacious deck via sliding doors with westerly views from which to enjoy the



GROSS INTERNAL AREA
 FLOOR 1: 143 m², EXCLUDED AREAS:
 PORCH: 19 m²
 TOTAL: 143 m²

MEASUREMENTS ARE CALCULATED BY CUBICASA TECHNOLOGY. DEEMED HIGHLY RELIABLE BUT NOT GUARANTEED.