



Stanley

2  2  1 

Located in the picturesque town of Stanley, only a short drive from Beechworth, this two-bedroom, two-bathroom, well-presented cottage is surrounded by private luscious parkland-style gardens, offering the perfect peaceful hideaway haven.

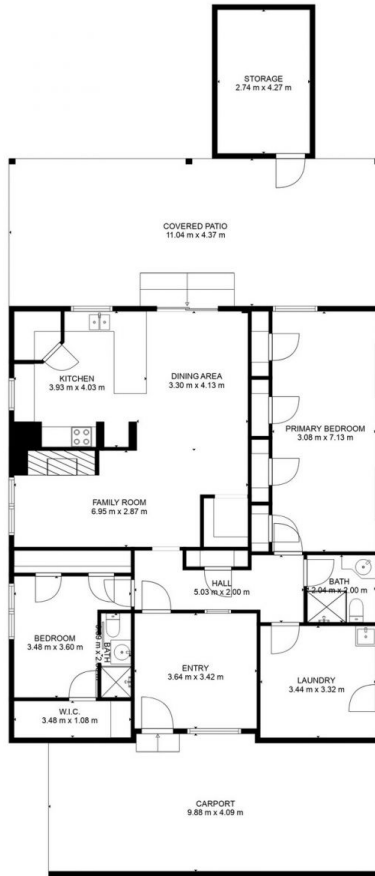
This well-maintained property features a good-sized kitchen with electric cooking, ample storage and meal preparation areas, and an adjacent dining area with access to the undercover entertainment area. The cosy, semi-separate lounge features a wood heater.

The master queen-size bedroom includes a walk-in-robe, additional storage, and an ensuite bathroom with shower, sink, and toilet. The second, super-king-size bedroom includes an abundance of storage. Both bedrooms are carpeted and include views to the surrounding gardens.

View : <https://www.indigorealestate.com.au/lease/vic/northern-eastern/stanley/residential/house/7670378>



Jaqui Ward
0357 283295



GROSS INTERNAL AREA

FLOOR 1: 135 m²

EXCLUDED AREAS: STORAGE: 12 m², COVERED PATIO: 48 m², CARPORT: 39 m²

TOTAL: 135 m²

MEASUREMENTS ARE CALCULATED BY CUBICASA TECHNOLOGY. DEEMED HIGHLY RELIABLE BUT NOT GUARANTEED.

