



13-15 Beechworth-Stanley Road Stanley VIC

3  1  2 

Centrally located in the heart of the Stanley and only a short walk to the village pub, recreational reserve, community hubs, and local walking and riding trails, this charm-filled red brick and iron-roofed cottage, with a rear weatherboard extension is comfortably positioned on approx. 1075sqm.

With its origins dating to the 1860s and retaining many of its period features, this home offers two queen-sized bedrooms, both with built-in robes and wall-mounted heat panels. One of the bedrooms is carpeted, and the second features polished hardwood floors which extend through to the potential third single bedroom/nursery/home office and the central formal dining room.

Type : House
Price : \$ 675,000
Land Size : 1075 sqm
View : <https://www.indigorealestate.com.au/sale/vic/north-eastern/stanley/residential/house/7559175>

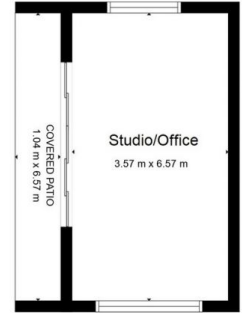
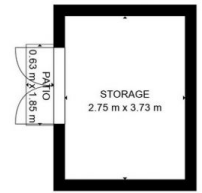
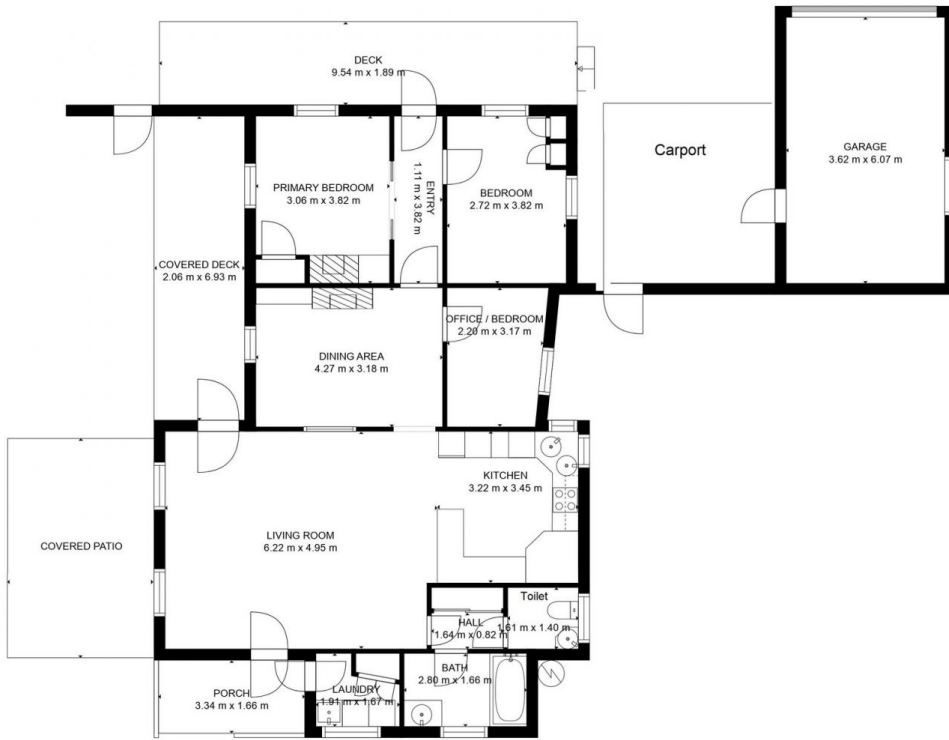


Jamie Horne
0357 283295



Jaqui Ward
0357 283295

[For full version visit the website](https://www.indigorealestate.com.au)



GROSS INTERNAL AREA
 FLOOR 1: 105 m², FLOOR 2: 34 m²
 EXCLUDED AREAS: , GARAGE: 22 m²
 DECK: 33 m², PATIO: 31 m²
 PORCH: 6 m²
 TOTAL: 138 m²

MEASUREMENTS ARE CALCULATED BY CUBICASA TECHNOLOGY. DEEMED HIGHLY RELIABLE BUT NOT GUARANTEED.

