



7 Fleury Court Beechworth VIC

4  2  2 

Located on a large allotment of approx. 1,490sqm, and situated in a quiet cul-de-sac, this four-bedroom, two-bathroom, multi-living area home is ideally positioned adjacent to the Baarmutha Sports Precinct and Golf Course, and within close proximity to local schools, Beechworth Health Service, walking and riding trails, and only a short drive or walk to central Beechworth.

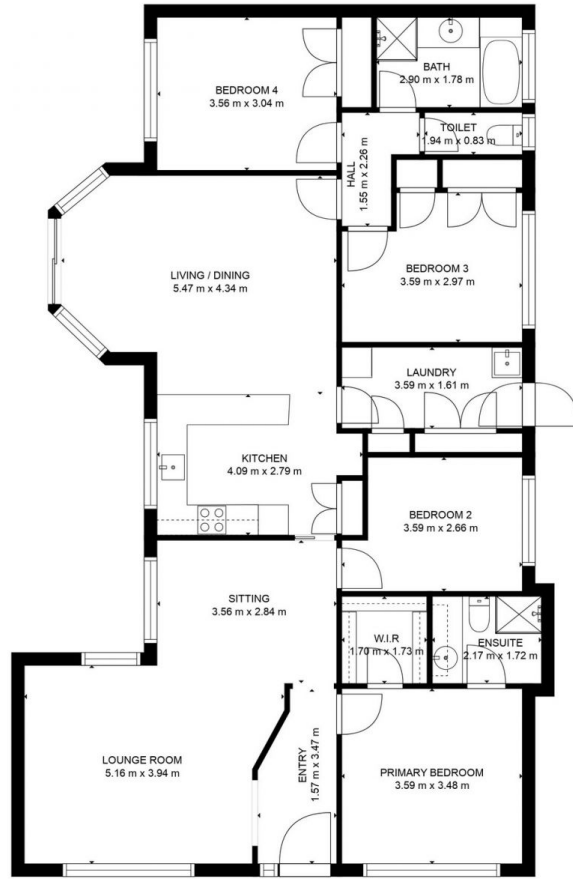
Surrounded by established private gardens, this home offers a light-filled king-size primary bedroom, featuring a walk-in-robe and tiled ensuite bathroom including a shower, toilet, and vanity. There are two additional queen-size bedrooms, and a double-size bedroom; each bedroom is carpeted, one of the queen-size and double bedroom feature built-in robes.

The recently updated and well-presented kitchen features a

View : <https://www.indigorealestate.com.au/lease/vic/northern-eastern/beechworth/residential/house/7486271>



Jaqui Ward
0357 283295



GROSS INTERNAL AREA

FLOOR 1: 139 m²

TOTAL: 139 m²

MEASUREMENTS ARE CALCULATED BY CUBICASA TECHNOLOGY. DEEMED HIGHLY RELIABLE BUT NOT GUARANTEED.

