



18 Orchard Grove Beechworth VIC

3  **2** 

Conveniently located and positioned on a low maintenance allotment of approx. 487sqm, this three-bedroom, two-bathroom home is situated within walking distance to the Beechworth Primary School, Baarmutha Sports Precinct, Queen Victoria Park, and Lake Sambell Reserve, and less than 1.5km's from the town centre, offering easy access to all the popular cafes, restaurants, shops, and conveniences Beechworth has to offer.

Land Size : 487 sqm
View : <https://www.indigorealestate.com.au/lease/vic/north-eastern/beechworth/residential/house/7484590>

This modern and recently renovated home features a large, king-size primary bedroom, featuring a walk-in-robe, and a tiled ensuite with shower, toilet, and vanity. There are two additional bedrooms, one king-size and one queen-size, both featuring built-in-robos, and offering direct access to the shared powder area. All bedrooms are carpeted.

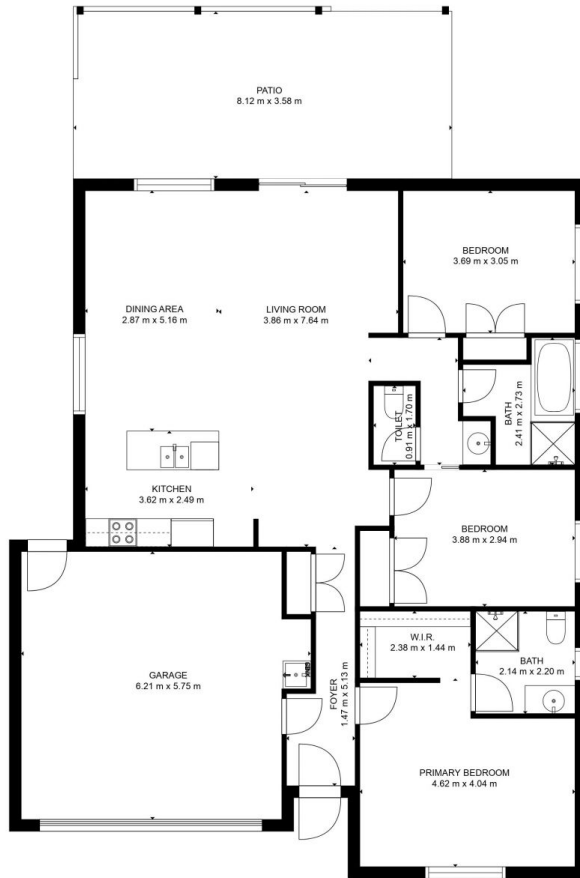


Jaqui Ward
0357 283295



Maxine Cappelli
0357283295

Overlooking the rear, private gardens, is the light-filled,



GROSS INTERNAL AREA
 FLOOR 1: 119 m², EXCLUDED AREAS:
 GARAGE: 33 m², PATIO: 29 m²
 TOTAL: 119 m²

MEASUREMENTS ARE CALCULATED BY CUBICASA TECHNOLOGY. DEEMED HIGHLY RELIABLE BUT NOT GUARANTEED.