



236-240 Mt Stanley Road Stanley VIC

4  2 

Privately situated on approx. 7245sqm this welcoming, charm-filled three-bedroom, one-bathroom home, and an additional one-bedroom, one-bathroom, fully self-contained, potentially income-producing cottage with its own private driveway, are set amidst lush established gardens and lawns and only minutes from central Stanley, and a short drive to nearby Beechworth.

The main residence features a spacious, light-filled, open-plan living area with vaulted ceilings, skylights, hardwood timber floors, reverse-cycle air-conditioning, ceiling fan, featured ceilings, and overlooks the expansive rear gardens. The kitchen features an electric oven and top, dishwasher, double stainless-steel sink, pantry, and a central meals area.

The adjacent family area includes a wood combustion

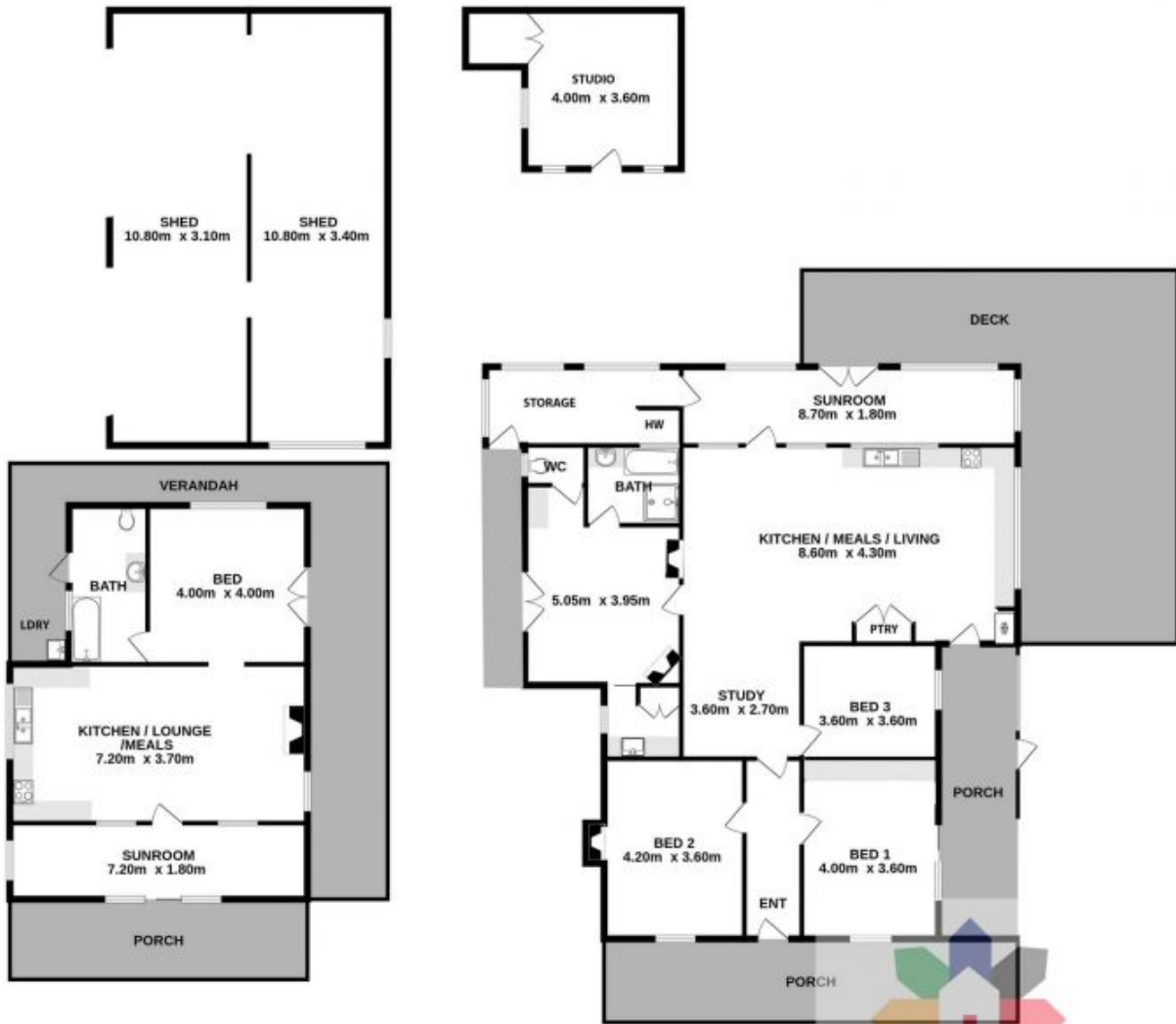
Price : \$ 859,000
Land Size : 7245 sqm
View : <https://www.indigorealestate.com.au/sale/vic/north-eastern/stanley/residential/house/7370650>



Jamie Horne
 0357 283295



Jaqui Ward
 0357 283295



Measurements are approximate. Not to Scale. Illustrative purpose only.