



## 6B Diffey Road Beechworth VIC

2  1  1 

Located on a sought-after and rare, generously sized allotment of approx. 2027sqm, this privately situated two-bedroom, one-bathroom, sandstone brick and iron roofed semi-detached home is surrounded by lush established gardens and is only a short walk or drive to local shops, cafes, restaurants, and conveniences.

This home includes an open-plan living area featuring a spacious, tiled kitchen with gas cooktop, electric oven, dishwasher, pantry and ample storage and meal preparation areas. The adjacent dining area is also generously sized, and offers direct access to the outside undercover verandah, Mediterranean-style paved entertainment area and an expansive private rear garden. The carpeted lounge benefits from both reverse-cycle air-conditioning and a wood heater.

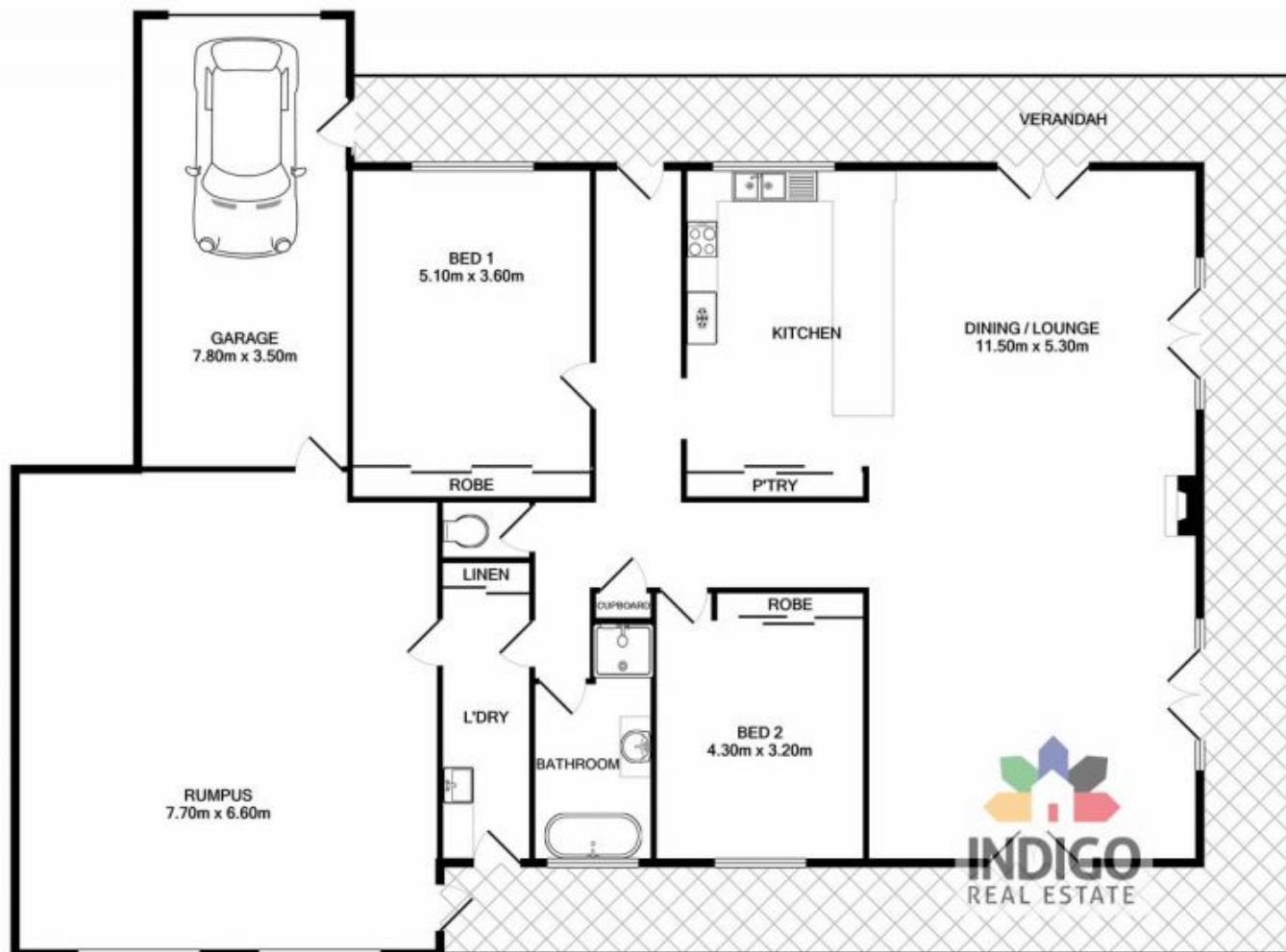
**Price** : \$ 650,000  
**Land Size** : 2027 sqm  
**View** : <https://www.indigorealestate.com.au/sale/vic/north-eastern/beechworth/residential/house/6579754>



**Jaqui Ward**  
 0357 283295



**Jamie Horne**  
 0357 283295



Measurements are approximate. Not to scale. Illustrative purposes only