



**50 Lower Stanley Road Beechworth VIC**

3  1  1 

Only a stone's throw from the iconic Lake Sambell and offering stunning views across Red Hill, this well constructed, low maintenance brick veneer home is perfectly located on an approx. 775sqm lot. Beechworth's popular hiking trails are within minutes' walk and the central shopping precinct, historic attractions and schools nearby.

**Price** : \$ 485,000  
**Land Size** : 775 sqm  
**View** : <https://www.indigorealestate.com.au/sale/vic/north-eastern/beechworth/residential/house/6076053>

Featuring three queen-size bedrooms, one with built-in-robies, this well presented home includes a spacious, sun filled lounge with floor to ceiling views of the rolling countryside. Walk through sliding doors to access the undercover verandah, elevated front yard and well manicured gardens.

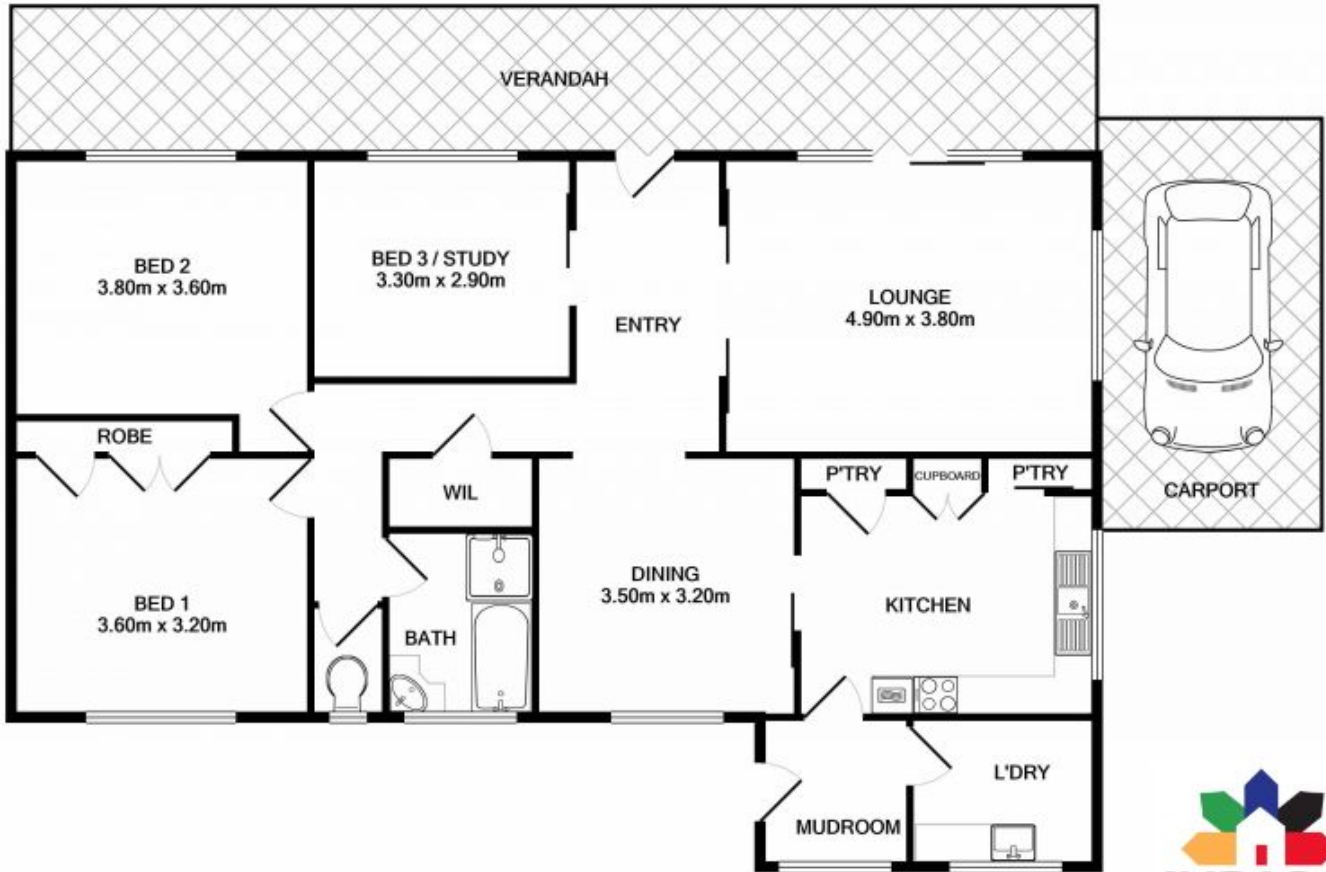
The kitchen includes an electric stove, two built-in pantries and ample meal preparation space and the adjacent dining room features a traditional brick archway. The central



**Jaqui Ward**  
0357 283295



**Jamie Horne**  
0357 283295



Measurements are approximate. Not to scale. Illustrative purposes only

