



10 Pritchard Lane Beechworth VIC

3  2  3 

Situated only a short walk to the heart of Beechworth and with some of the finest views across the Beechworth Gorge and the Newton Falls this contemporary styled north facing home will appeal to the most discerning of buyers wanting to secure an 'as new' home offering modern conveniences combined with stunning views and a relaxing ambiance.

Colorbond clad and with an enviable six-star energy efficiency rating, this home features three generously sized bedrooms. The carpeted king-size master bedroom is ideally positioned to capture the morning sun and has private and uninterrupted views across to Newton Bridge. With a spacious walk-in-robe and ensuite with shower, toilet and redgum cabinetry the master bedroom captures the relaxing country charm and views Beechworth is famous for. Both additional bedrooms are queen-size, carpeted and include built-in-robos and ceiling fans.

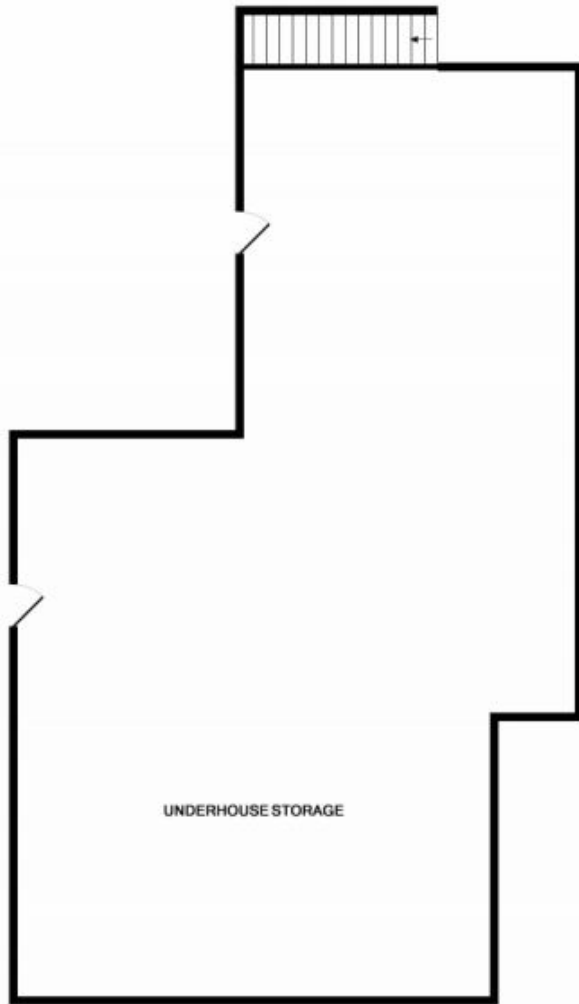
Price : \$ 645,000
Land Size : 1003 sqm
View : <https://www.indigorealestate.com.au/sale/vic/north-eastern/beechworth/residential/house/5670252>



Jamie Horne
 0357 283295

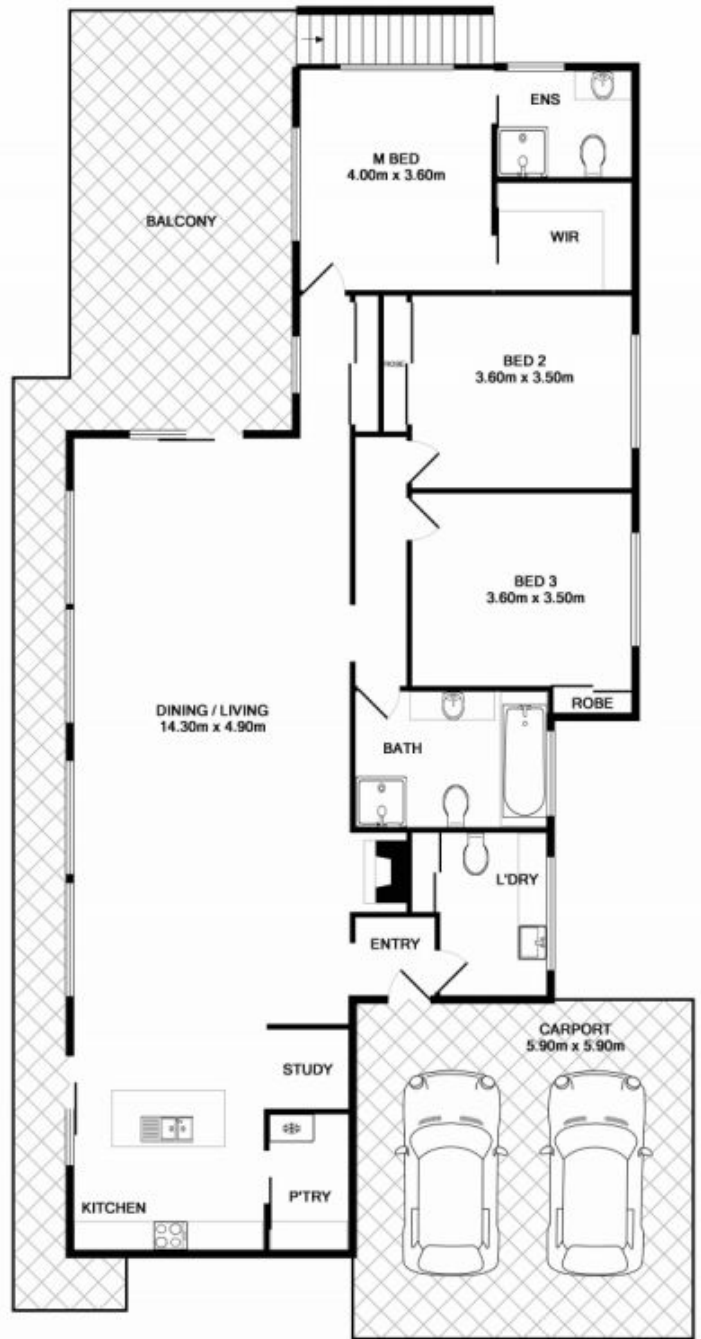


Jaqui Ward
 0357 283295



BASEMENT LEVEL

Measurements are approximate. Not to scale. Illustrative purposes only



GROUND FLOOR