



## 28 Payne Road Beechworth VIC

3  2  2 

Surrounded by lush established gardens and only a short drive from the heart of Beechworth and all the popular shops, cafes, restaurants, history and experiences this welcoming and privately positioned three-bedroom, two-bathroom, brick and iron roofed home is located on approx. 4330sqm. Walking trails, popular cycling routes and a wonderful local community are all nearby.

Proudly presented and maintained throughout, this home features a king-sized, light-filled, easterly facing master bedroom wing with large windows providing views to extensive gardens and a generous walk-in-robe. The master also features a tiled and roomy ensuite with shower and vanity plus a separate toilet.

Both additional bedrooms are queen-sized and feature built-in-robos and are located in the guest / children's wing

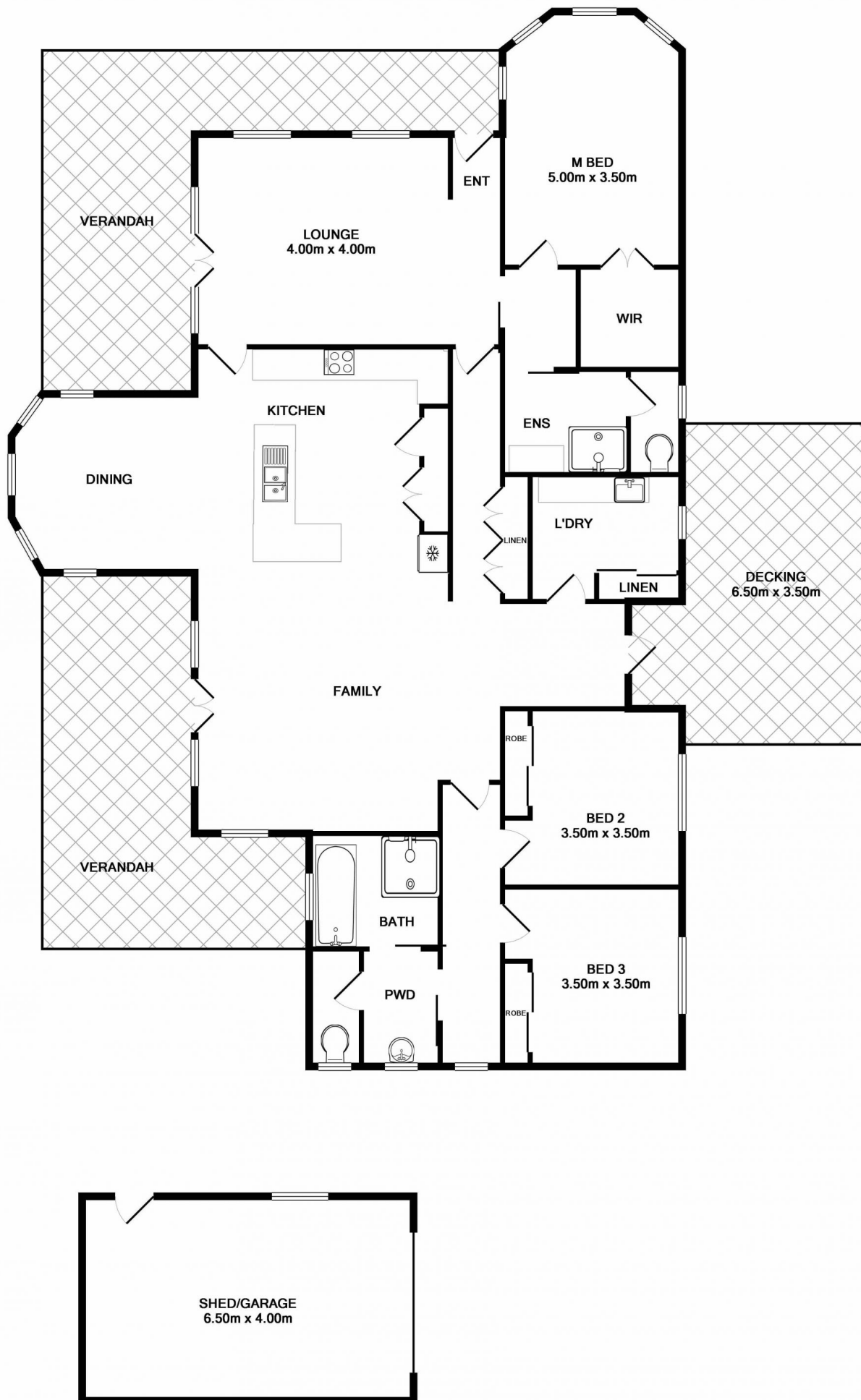
**Price** : \$ 720,000  
**Land Size** : 4330 sqm  
**View** : <https://www.indigorealestate.com.au/sale/vic/north-eastern/beechworth/residential/house/5670192>



**Jamie Horne**  
 0357 283295



**Jaqui Ward**  
 0357 283295



TOTAL APPROX. FLOOR AREA 207.0 SQ.M. (2228 SQ.FT.)  
Measurements are approximate. Not to scale. Illustrative purposes only