



142 Stanley Road Beechworth VIC

4  2  1 

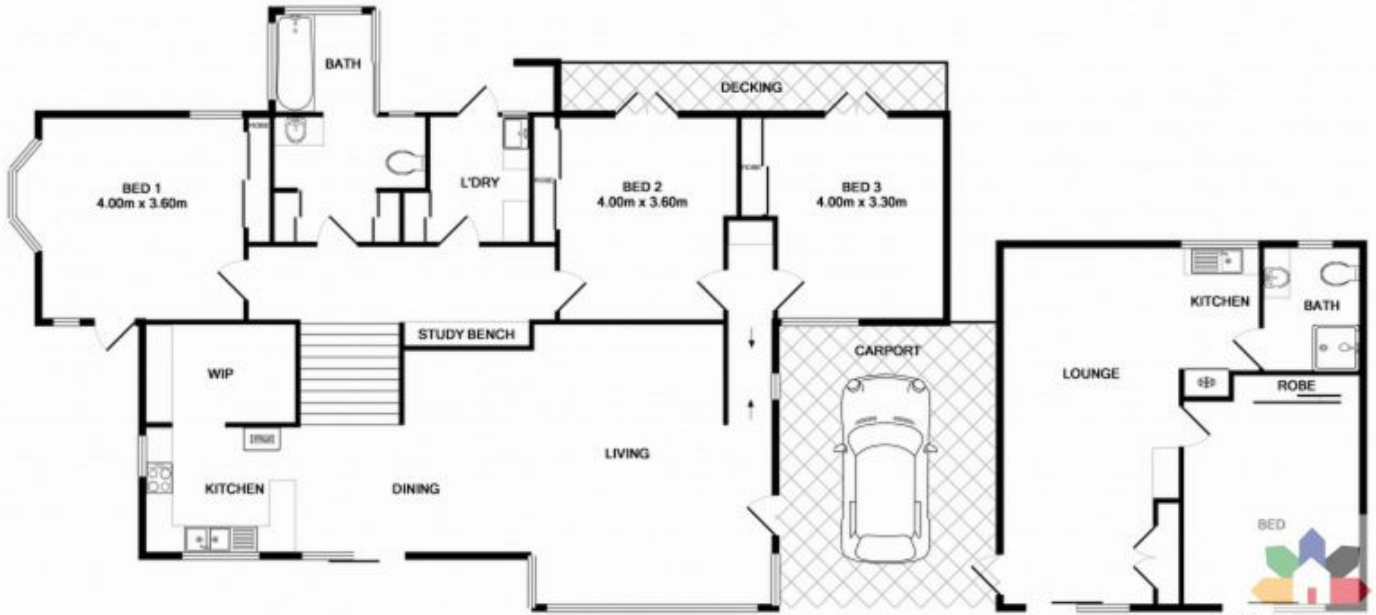
Privately located only 2km to central Beechworth on approx. 7453sqm at the end of a long and welcoming tree-lined driveway this four-bedroom, two-bathroom mudbrick and iron roofed home is peacefully situated amidst established gardens and is only a short 300m to established walking and riding trails along Silver Creek.

Price : \$ 510,000
Land Size : 7453 sqm
View : <https://www.indigorealestate.com.au/sale/vic/north-eastern/beechworth/residential/house/5670170>

The main living area of this home includes high pitched ceilings and an open-plan kitchen, dining and lounge with extensive north facing windows allowing for plenty of natural light to fill the home. The kitchen includes a stove, gas cooktop, dishwasher, pantry and an adjacent dining area. The lounge features a wood heater, ceiling fan and gas heater and there is an additional large sunroom idyllically positioned at the front of the home with views across the gardens and swimming pool.



Jamie Horne
 0357 283295



TOTAL APPROX. FLOOR AREA 186.9 SQ.M. (2011 SQ.FT.)
Measurements are approximate. Not to scale. Illustrative purposes only.
Made with Metropix ©2017

