



33 Camp Street Beechworth VIC

3  2 

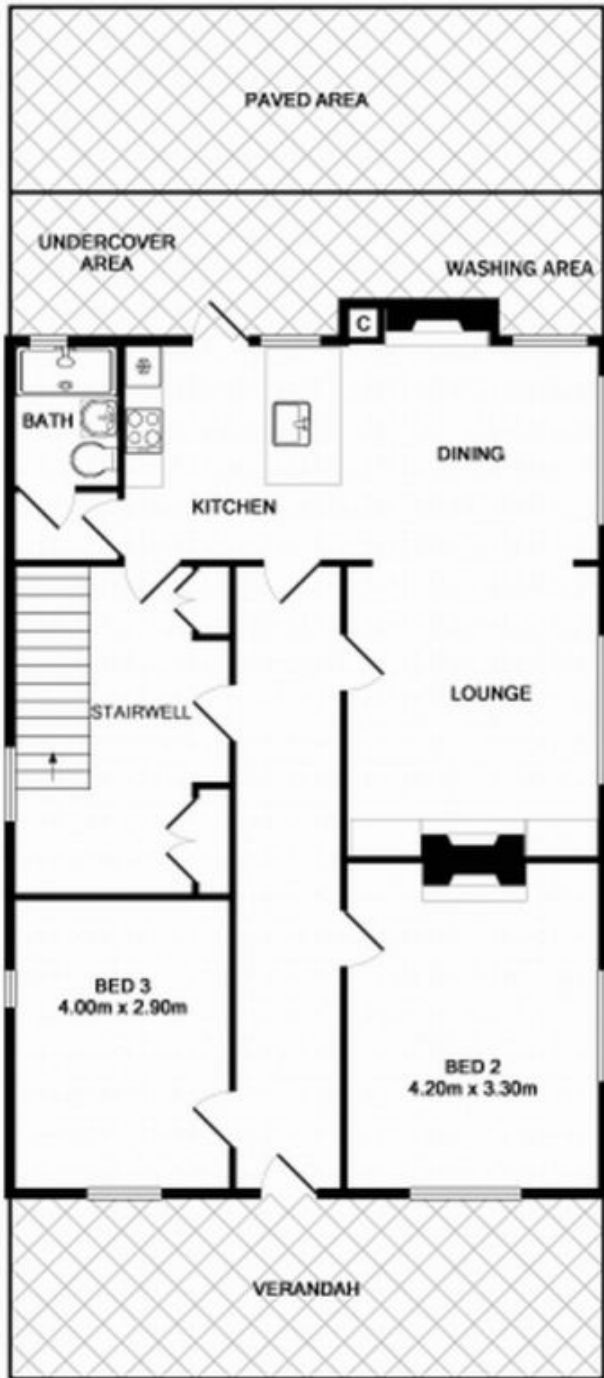
Located in the heart of Beechworth the stunning and immediately welcoming 'Marlo Cottage' currently operates as a self-contained cottage offering accommodation for up to six people and is only metres from all the best shops, cafes and restaurants in central Beechworth. This fully renovated cottage spans two levels with the upstairs room reportedly being the location at which Beechworth's 19th Century photographer J H Bray took Ned Kelly's photograph.

Marlo Cottage includes the master queen-size bedroom featuring vaulted timber lined ceilings, built-in-robe, reverse-cycle air-conditioning, polished floorboards and a tiled ensuite with an inviting and deep free-standing bath, large shower, toilet and vanity. The original timber staircase is wide and includes extra storage underneath. The two additional double size bedrooms are located downstairs

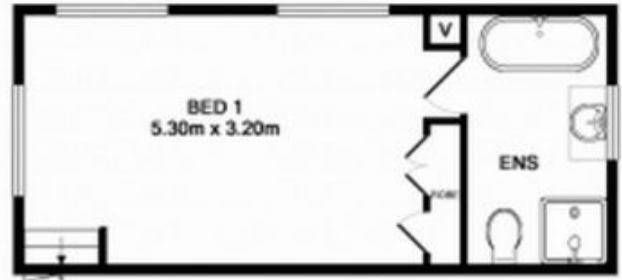
Price : \$ 490,000
Land Size : 166 sqm
View : <https://www.indigorealestate.com.au/sale/vic/north-eastern/beechworth/residential/house/5670167>



Jamie Horne
 0357 283295



GROUND FLOOR



1ST FLOOR

Measurements are approximate. Not to scale. Illustrative purposes only

