



22 Warner Road Beechworth VIC

4 🚗 2 🚗 6 🚗

Ideally situated on a low maintenance allotment of approx. 695sqm with elevated views over Beechworth this 2007 brick and color bond roofed home is full of charm, style and low maintenance convenience in an established and sought-after Beechworth area.

Price : \$ 575,000
Land Size : 695 sqm
View : <https://www.indigorealestate.com.au/sale/vic/north-eastern/beechworth/residential/house/5670146>

The wide and welcoming central hallway leads to the main living areas, an open plan kitchen and dining area, undercover entertainment and the king-size master bedroom which features a large walk-in-robe, spacious ensuite and ceiling. The three additional queen-size bedrooms are located at the front of this home and all are carpeted and include built-in-ropes.

The main tiled bathroom is spacious and features a spa bath, recessed shower and vanity. The toilet is separate and the laundry includes good storage and independent

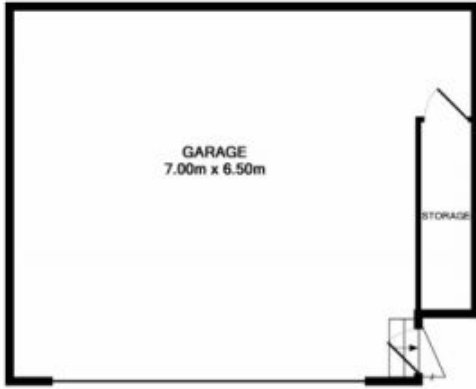


Jamie Horne
 0357 283295

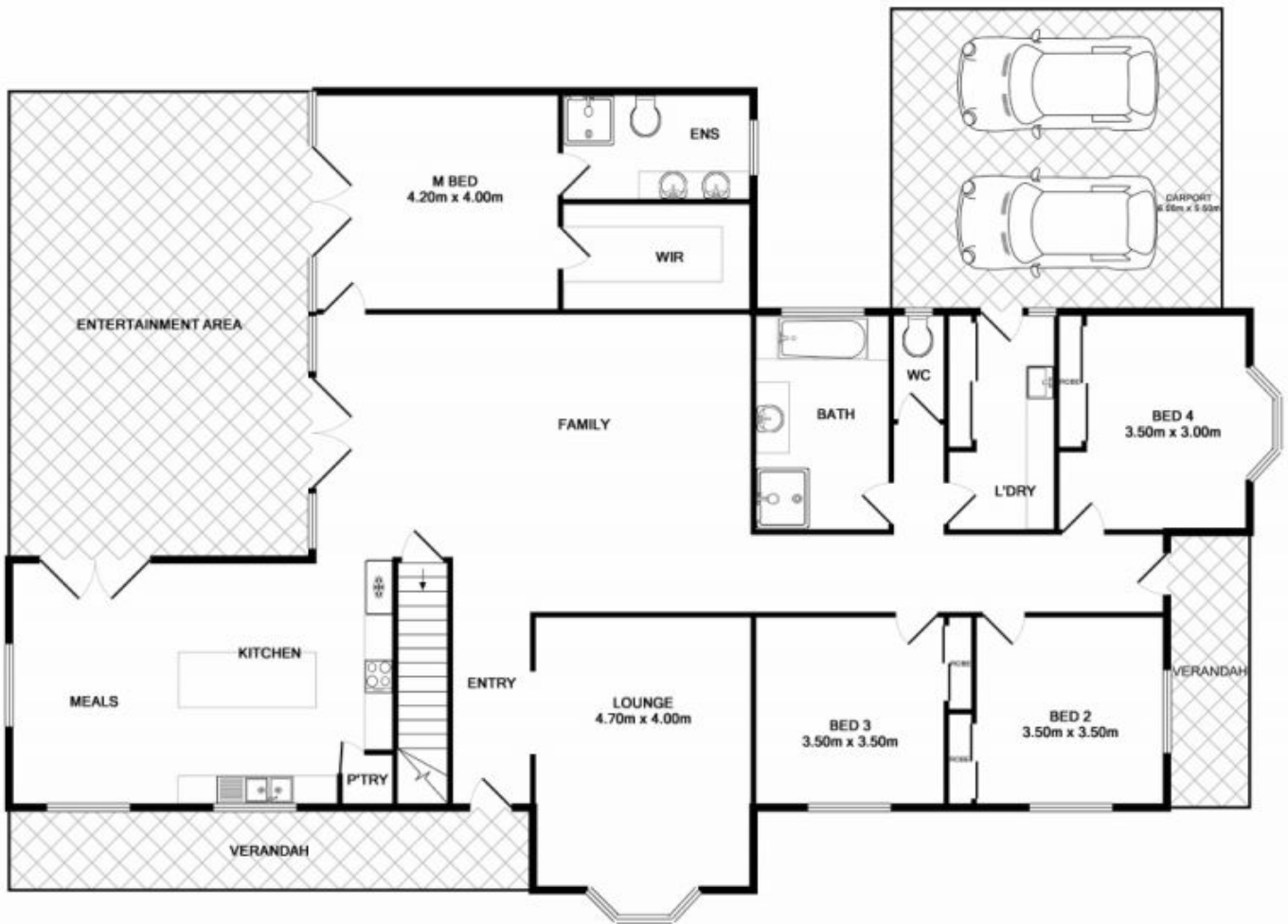
TOTAL APPROX. FLOOR AREA 260.2 SQ.M. (2800 SQ.FT.)
Measurements are approximate. Not to scale. Illustrative purposes only.



INDIGO
REAL ESTATE



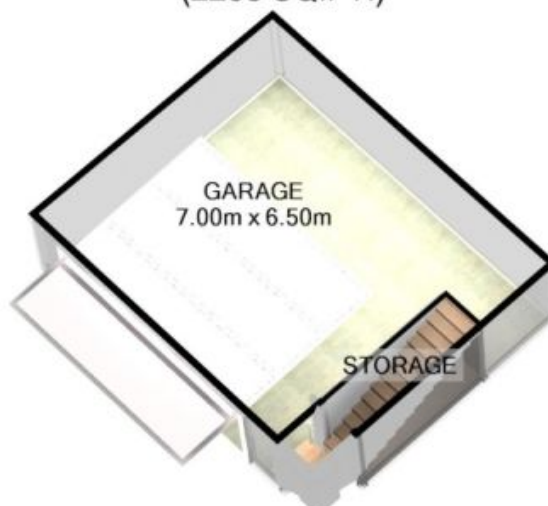
BASEMENT LEVEL
APPROX. FLOOR
AREA 50.4 SQ.M.
(542 SQ.FT.)



GROUND FLOOR
APPROX. FLOOR
AREA 209.8 SQ.M.
(2258 SQ.FT.)



GROUND FLOOR
 APPROX. FLOOR
 AREA 209.8 SQ.M.
 (2258 SQ.FT.)



BASEMENT LEVEL
 APPROX. FLOOR
 AREA 50.4 SQ.M.
 (542 SQ.FT.)

TOTAL APPROX. FLOOR AREA 260.2 SQ.M. (2800 SQ.FT.)



For illustrative purposes only. Decorative finishes, fixtures, fittings and furnishings do not represent the current state of the property. Measurements are approximate. Not to scale