



2C Jarvis Road Beechworth VIC

3  2  3 

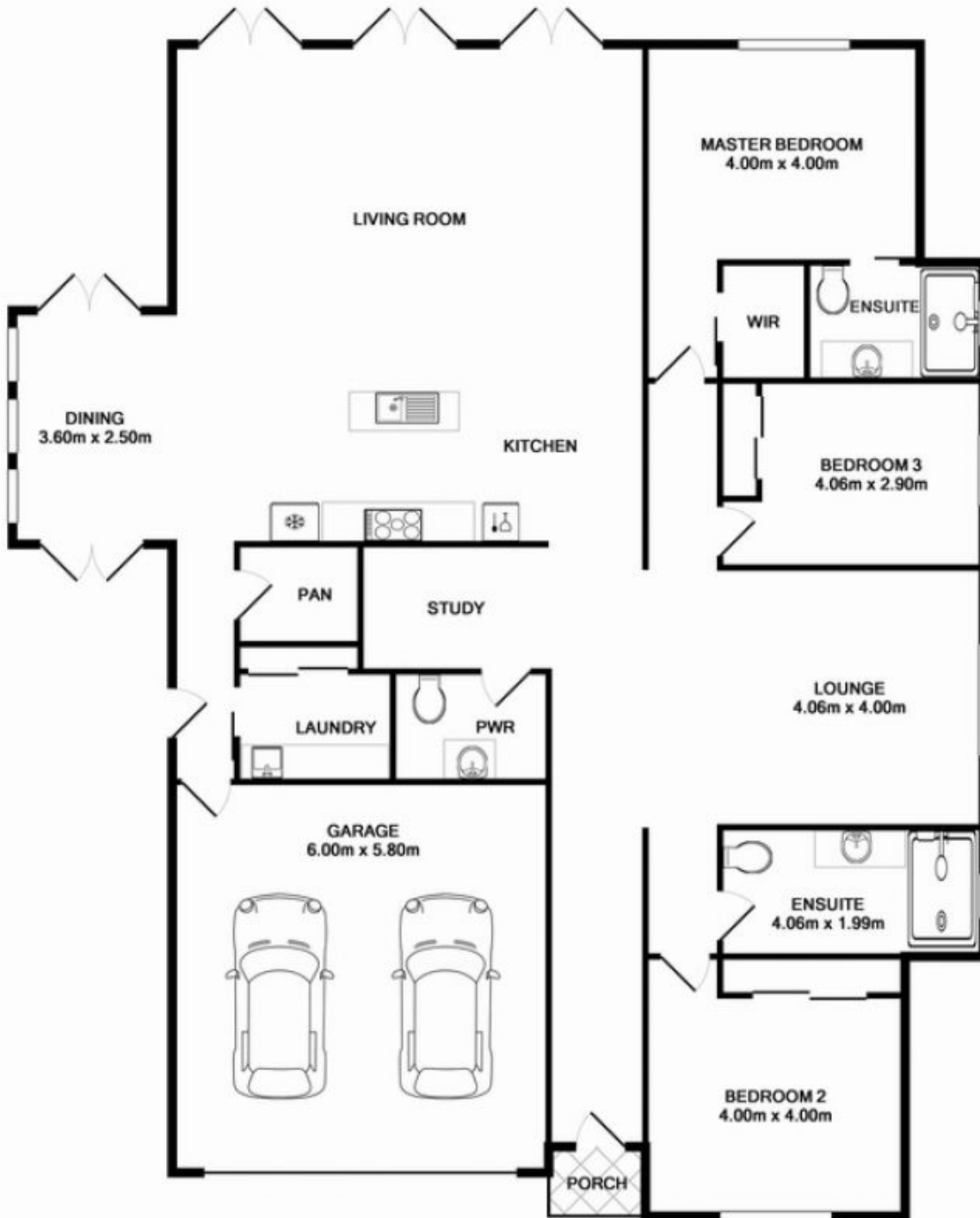
Elegance, Charm, Lifestyle, Location and Quality are just some of what the lucky new owner of this home will enjoy. Located on approx. 604sqm in Beechworth' finest estate this 3 bedroom, 2 bathroom home overlooks Lake Sambell and forecourt pondage. This home is 'as new' and was been architecturally designed, quality built and finished with only the best of fixtures. With many high end features including 9ft & 10ft ceilings, Italian Tapware, Italian Tiles, 2.4m high doors and bevelled bathroom mirrors this home will appeal to buyers wanting to secure one of the best quality homes we have seen built and offered for sale in Beechworth.

The King-sized master bedroom is privately positioned to the rear of the home and includes a large ensuite and walk-in-robe. The second Queen-sized bedroom is located at the front of the house and, as with the 3rd Double-sized

Price : \$ 579,000
Land Size : 604 sqm
View : <https://www.indigorealestate.com.au/sale/vic/north-eastern/beechworth/residential/house/5670049>



Jamie Horne
 0357 283295



TOTAL APPROX. FLOOR AREA 220.9 SQ.M. (2377 SQ.FT.)
Measurements are approximate. Not to Scale. For illustrative purposes only.



TOTAL APPROX. FLOOR AREA 220.9 SQ.M. (2377 SQ.FT.)

For illustrative purposes only. Decorative finishes, fixtures, fittings and furnishings do not represent the current state of the property. Measurements are approximate. Not to scale